



DAVID BRENTON'S TEAM

RE/MAX Select, REALTORS

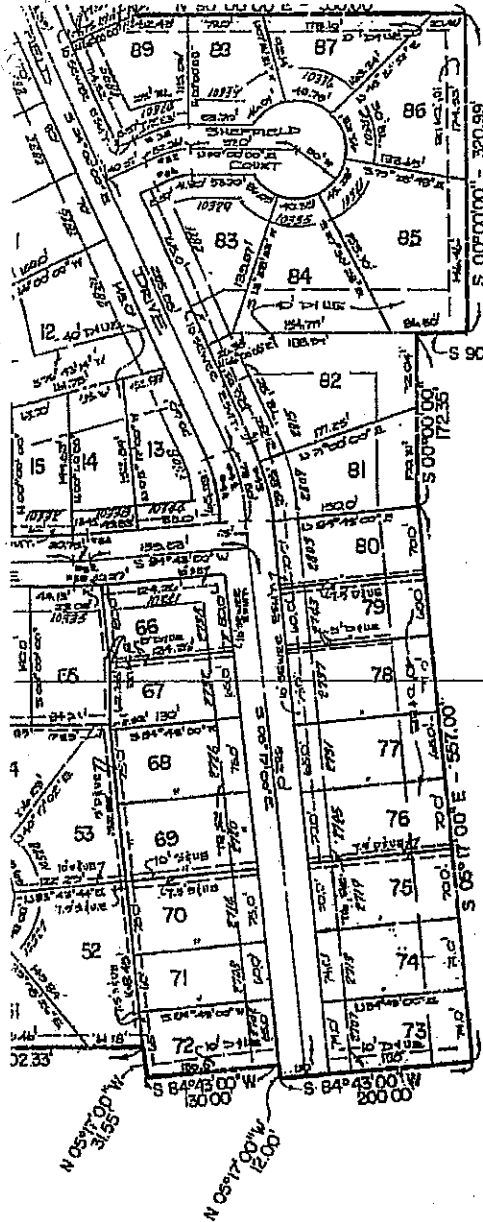
48 N Emerson Ave Suite 600 Greenwood, IN 46143-8895

(317) 882-7210 Office • (317) 888-7201 Fax

www.move2indy.com

The covenants provided may or may not include any amendments made due to governing agencies (ie: national, state, city, local and neighborhood agencies). Please contact the Recorder's office for the county where the property is located to receive updated information.

The information is deemed reliable, but not guaranteed.



SHEFFIELD WOODS SECTION ONE

CERTIFICATE OF SURVEY

I, the undersigned, hereby certify that the within plat is true and correct and represents a part of the East Half of the Northwest Quarter of Section 28, Township 16 North of Range 6 East in Marion County, Indiana being more particularly described as follows, to-wit:

Beginning at a point on the North line of the said East Half Quarter Section 710.00 feet South 90 degrees 00 minutes 00 seconds West of the Northeast corner of the said East Half Quarter Section; thence South 00 degrees 00 minutes 00 seconds a distance of 200.20 feet to a point; thence North 90 degrees 00 minutes 00 seconds East and parallel with said North line 14.42 feet to a point; thence South 00 degrees 00 minutes 00 seconds a distance of 140.00 feet to a point; thence North 90 degrees 00 minutes 00 seconds East and parallel with said North line 38.82 feet to a point; thence South 00 degrees 00 minutes 00 seconds a distance of 170.00 feet to a point; thence North 90 degrees 00 minutes 00 seconds East and parallel with said North line 330.00 feet to a point; thence South 00 degrees 00 minutes 00 seconds a distance of 320.99 feet to a point; thence South 80 degrees 00 minutes 00 seconds West and parallel with said North line 62.35 feet to a point; thence South 00 degrees 00 minutes 00 seconds a distance of 172.35 feet to a point; thence South 05 degrees 17 minutes 00 seconds East 557.00 feet to a point; thence South 81 degrees 43 minutes 00 seconds West 200.00 feet to a point; thence North 05 degrees 17 minutes 00 seconds West 12.00 feet to a point; thence South 84 degrees 43 minutes 00 seconds West 130.00 feet to a point; thence North 05 degrees 17 minutes 00 seconds West 31.55 feet to a point; thence South 90 degrees 00 minutes 00 seconds West and parallel with said North line 402.33 feet to a point; thence North 00 degrees 00 minutes 00 seconds a distance of 40.00 feet to a point; thence South 90 degrees 00 minutes 00 seconds West and parallel with said North line 100.00 feet to a point; thence South 00 degrees 00 minutes 00 seconds a distance of 20.00 feet to a point; thence South 90 degrees 00 minutes 00 seconds West and parallel with said North line 181.16 feet to the West line of the East Half of said Quarter Section; thence North 00 degrees 07 minutes 07 seconds East upon and along said West line 1525.00 feet to the Northwest corner of said East Half Quarter Section; thence North 90 degrees 00 minutes 00 seconds East upon and along said North line 630.76 feet to the BEGINNING POINT; containing 31.245 acres more or less.

This subdivision consists of 92 lots numbered 1 through 92 both inclusive together with streets, easements, and public ways as shown on the within plat.

The size of lots and widths of streets and easements are shown in figures denoting feet and decimal parts thereof.

WITNESS MY SIGNATURE this 14TH day of SEPT 1972.



Vincent J. Schneider
 VINCENT J. SCHNEIDER
 Reg. Land Surveyor - Indiana 10286

